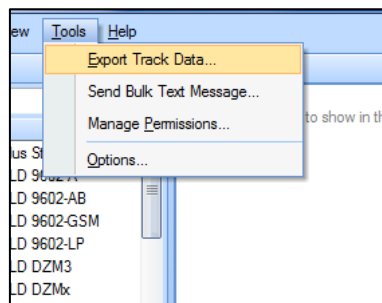


## Exporting Your Tracking Data

There are 2 different ways that you can export your tracking data from within TracPlus Pro 3. You can use the 'Export Track Data' under 'Tools' on the menu bar or by selecting the data you want to copy from 'Track Data' under 'View' on the menu bar. Both methods give you two options for how you want to save the reports; the second method also gives you the ability to copy and then to paste selected tracking reports.

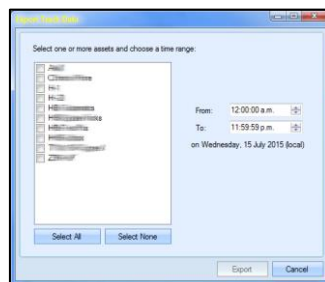
### 1<sup>st</sup> Option: From Tools on the Menu Bar

In the calendar select the day that you are wanting the tracking reports exported for. You can only export tracking one day at a time.



Export Track

You can either select an asset in the Watchlist or go to 'Tools' on the Menu Bar. Click on the 'Export Track Data,' If the asset has not yet been selected, tick the asset you want to export the tracking for. Untick any other assets that may have a tick next to them. However you can select multiply assets to export the tracking for.

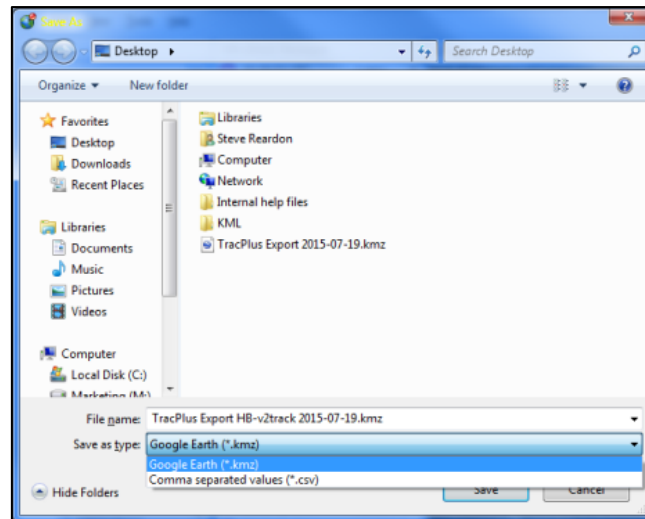


Export Tracking Dialog Box

In TracPlus Pro you will only be able to view the tracking data for which you already have permission to see.

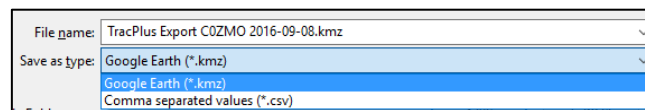
Next check the time range. The default is the full day. You can narrow the time range of the tracking data for a specific period of the day.

Then click the 'Export' button to open the 'Save As' Dialog Box.



Save As Dialog Box

This will open up the 'Save As' dialogue box where you can name the file, select the file type and select where you want to save the file to. A default name is set for the file but this can be changed if you wish.

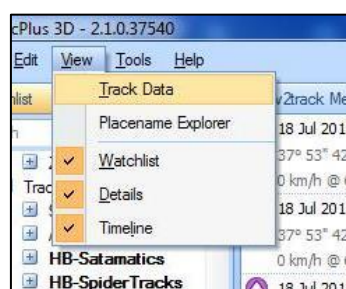


File Type Options

Select the file Type that you want the file formatted as. The two options available are as either a CSV file or a KMZ file. A 'CSV' file is a text file that can be loaded into other programs such as 'MS Excel'. A 'KMZ' data file is one that can be viewed in either Google Earth or in TracPlus Pro 3.

Then set the location for where you want to save the file in the main portion of the dialogue box.

## 2nd Option: From View on the Menu Bar



Menu

Fist select the date and the asset that you are wanting to see the tracking for. Then go to 'View' on the Menu Bar and select 'Track Data.'

Track Data for HB-Iridium-9602A on Thursday, 6 October 2016											
	Latitude	Longitude	Altitude	Track	Speed	Type	SAR?	Events	Text	Valid Fix?	Fix Quality
	45° 50' 28.1" S	170° 31' 09.1" E	587 ft	121.0° T	0 km/h	MO	No	Standard		Yes	3D
	45° 50' 28.2" S	170° 31' 09.2" E	587 ft	171.0° T	0 km/h	MO	No	Standard		Yes	3D
	45° 50' 28.2" S	170° 31' 09.2" E	587 ft	182.0° T	0 km/h	MO	No	Standard		Yes	3D
	45° 50' 28.2" S	170° 31' 09.0" E	561 ft	139.0° T	0 km/h	MO	No	Standard		Yes	3D
	45° 50' 28.2" S	170° 31' 09.0" E	561 ft	297.0° T	0 km/h	MO	No	Standard		Yes	3D
	45° 50' 28.2" S	170° 31' 09.0" E	561 ft	242.0° T	0 km/h	MO	No	Standard		Yes	3D
	45° 50' 28.2" S	170° 31' 09.0" E	587 ft	191.0° T	0 km/h	MO	No	Standard		Yes	3D
	45° 50' 28.2" S	170° 31' 09.0" E	587 ft	245.0° T	0 km/h	MO	No	Standard		Yes	3D
	45° 50' 28.2" S	170° 31' 09.0" E	587 ft	186.0° T	0 km/h	MO	No	Standard		Yes	3D
	45° 50' 28.2" S	170° 31' 09.0" E	587 ft	259.0° T	0 km/h	MO	No	Standard		Yes	3D
	45° 50' 28.1" S	170° 31' 09.0" E	587 ft	172.0° T	0 km/h	MO	No	Standard		Yes	3D
	45° 50' 28.2" S	170° 31' 09.0" E	561 ft	224.0° T	0 km/h	MO	No	Standard		Yes	3D
	45° 50' 28.2" S	170° 31' 09.1" E	587 ft	162.0° T	0 km/h	MO	No	Standard		Yes	3D
	45° 50' 28.2" S	170° 31' 09.0" E	587 ft	329.0° T	0 km/h	MO	No	Standard		Yes	3D
	45° 50' 28.2" S	170° 31' 09.0" E	587 ft	297.0° T	0 km/h	MO	No	Standard		Yes	3D
	45° 50' 28.4" S	170° 31' 09.2" E	561 ft	215.0° T	0 km/h	MO	No	Standard		Yes	3D
	45° 50' 28.4" S	170° 31' 09.1" E	561 ft	214.0° T	0 km/h	MO	No	Standard		Yes	3D
	45° 50' 28.4" S	170° 31' 09.2" E	587 ft	183.0° T	0 km/h	MO	No	Standard		Yes	3D
	45° 50' 28.4" S	170° 31' 09.2" E	587 ft	188.0° T	0 km/h	MO	No	Standard		Yes	3D
	45° 50' 28.3" S	170° 31' 09.2" E	587 ft	188.0° T	0 km/h	MO	No	Standard		Yes	3D

Tracking Data

The tracking reports can be organised in either ascending or descending order on a specific column by clicking the on the columns head at the top. The tracking reports are then ordered on the values in that column. To reset back to the original order click on the very left hand column titled 'Message.'

To copy the reports you want, you can either select all of them by holding the shift key and clicking on the top row, or hold the shift key and clicking a row further on down. This selects all the rows that are in between the top row and the selected row.

To copy individual rows hold the Ctrl key and while holding it down, click on the individual rows that you want to copy. Clicking on a row already selected will remove this row from the ones you want to copy.

	Latitude	Longitude	Altitude	Track	Speed	Type	SAR?	Events	Text	Valid Fix?	Fix Quality
	45° 50' 28.1" S	170° 31' 09.1" E	587 ft	121.0° T	0 km/h	MO	No	Standard		Yes	3D
	45° 50' 28.2" S	170° 31' 09.2" E	587 ft	171.0° T	0 km/h	MO	No	Standard		Yes	3D
	45° 50' 28.2" S	170° 31' 09.2" E	587 ft	182.0° T	0 km/h	MO	No	Standard		Yes	3D
	45° 50' 28.2" S	170° 31' 09.0" E	561 ft	139.0° T	0 km/h	MO	No	Standard		Yes	3D
	45° 50' 28.2" S	170° 31' 09.0" E	561 ft	297.0° T	0 km/h	MO	No	Standard		Yes	3D
	45° 50' 28.2" S	170° 31' 09.0" E	561 ft	242.0° T	0 km/h	MO	No	Standard		Yes	3D
	45° 50' 28.2" S	170° 31' 09.0" E	587 ft	191.0° T	0 km/h	MO	No	Standard		Yes	3D
	45° 50' 28.2" S	170° 31' 09.0" E	587 ft	245.0° T	0 km/h	MO	No	Standard		Yes	3D
	45° 50' 28.2" S	170° 31' 09.0" E	587 ft	186.0° T	0 km/h	MO	No	Standard		Yes	3D
	45° 50' 28.2" S	170° 31' 09.0" E	587 ft	259.0° T	0 km/h	MO	No	Standard		Yes	3D
	45° 50' 28.1" S	170° 31' 09.0" E	587 ft	172.0° T	0 km/h	MO	No	Standard		Yes	3D
	45° 50' 28.2" S	170° 31' 09.0" E	561 ft	224.0° T	0 km/h	MO	No	Standard		Yes	3D
	45° 50' 28.2" S	170° 31' 09.1" E	587 ft	162.0° T	0 km/h	MO	No	Standard		Yes	3D
	45° 50' 28.2" S	170° 31' 09.0" E	587 ft	329.0° T	0 km/h	MO	No	Standard		Yes	3D
	45° 50' 28.2" S	170° 31' 09.0" E	587 ft	297.0° T	0 km/h	MO	No	Standard		Yes	3D
	45° 50' 28.4" S	170° 31' 09.2" E	561 ft	215.0° T	0 km/h	MO	No	Standard		Yes	3D
	45° 50' 28.4" S	170° 31' 09.1" E	561 ft	214.0° T	0 km/h	MO	No	Standard		Yes	3D
	45° 50' 28.4" S	170° 31' 09.2" E	587 ft	183.0° T	0 km/h	MO	No	Standard		Yes	3D
	45° 50' 28.4" S	170° 31' 09.2" E	587 ft	188.0° T	0 km/h	MO	No	Standard		Yes	3D

Selected Tracking Data

Once you have the list, it is possible to copy all of the rows, or a smaller group of the rows or even select individual rows.

488	16:16:17 local	45° 50' 28.1" S	170° 31' 09.0" E	561 ft	238.0° T	0 km/h	MO	No	Standard	Yes
487	16:14:14 local	45° 50' 28.1" S	170° 31' 09.1" E	587 ft	238.0° T	0 km/h	MO	No	Standard	Yes
486	16:12:13 local	45° 50' 28.1" S	170° 31' 09.0" E	561 ft	238.0° T	0 km/h	MO	No	Standard	Yes
485	16:10:15 local	45° 50' 28.2" S	170° 31' 09.0" E	561 ft	290.0° T	0 km/h	MO	No	Standard	Yes
484	16:08:15 local	45° 50' 28.1" S	170° 31' 09.0" E	587 ft	169.0° T	0 km/h	MO	No	Standard	Yes
483	16:06:14 local	45° 50' 28.1" S	170° 31' 09.0" E	587 ft	157.0° T	0 km/h	MO	No	Standard	Yes
482	16:04:15 local	45° 50' 28.1" S	170° 31' 09.0" E	587 ft	157.0° T	0 km/h	MO	No	Standard	Yes
481	16:02:15 local	45° 50' 28.1" S	170° 31' 09.0" E	587 ft	157.0° T	0 km/h	MO	No	Standard	Yes
480	16:00:16 local	45° 50' 28.1" S	170° 31' 09.0" E	587 ft	157.0° T	0 km/h	MO	No	Standard	Yes
479	15:58:14 local	45° 50' 28.1" S	170° 31' 09.0" E	561 ft	157.0° T	0 km/h	MO	No	Standard	Yes
478	15:56:14 local	45° 50' 28.1" S	170° 31' 09.0" E	587 ft	157.0° T	0 km/h	MO	No	Standard	Yes
477	15:54:13 local	45° 50' 28.1" S	170° 31' 09.0" E	561 ft	157.0° T	0 km/h	MO	No	Standard	Yes
476	15:52:14 local	45° 50' 28.1" S	170° 31' 09.0" E	587 ft	134.0° T	0 km/h	MO	No	Standard	Yes
475	15:50:15 local	45° 50' 28.1" S	170° 31' 09.0" E	587 ft	134.0° T	0 km/h	MO	No	Standard	Yes
474	15:48:14 local	45° 50' 28.1" S	170° 31' 09.0" E	561 ft	134.0° T	0 km/h	MO	No	Standard	Yes
473	15:46:14 local	45° 50' 28.1" S	170° 31' 09.0" E	587 ft	134.0° T	0 km/h	MO	No	Standard	Yes
472	15:44:14 local	45° 50' 28.1" S	170° 31' 09.0" E	587 ft	134.0° T	0 km/h	MO	No	Standard	Yes
471	15:42:14 local	45° 50' 28.2" S	170° 31' 09.0" E	587 ft	134.0° T	0 km/h	MO	No	Standard	Yes
470	15:40:13 local	45° 50' 28.1" S	170° 31' 09.0" E	561 ft	127.0° T	0 km/h	MO	No	Standard	Yes
469	15:38:14 local	45° 50' 28.1" S	170° 31' 09.0" E	561 ft	127.0° T	0 km/h	MO	No	Standard	Yes
468	15:36:14 local	45° 50' 28.1" S	170° 31' 09.1" E	561 ft	037.0° T	0 km/h	MO	No	Standard	Yes

Copy / Paste Tracking Data

You can, either copy and paste the selection into a program such as Microsoft6 Excel, or right click and select 'Export' from the pop-up menu. This then allows you save as either a CSV file of a KMZ file in the same steps as above.

Should you have further questions please do not hesitate to contact the TracPlus support team on [support@tracplus.com](mailto:support@tracplus.com) or call +64 (3) 477 8656.